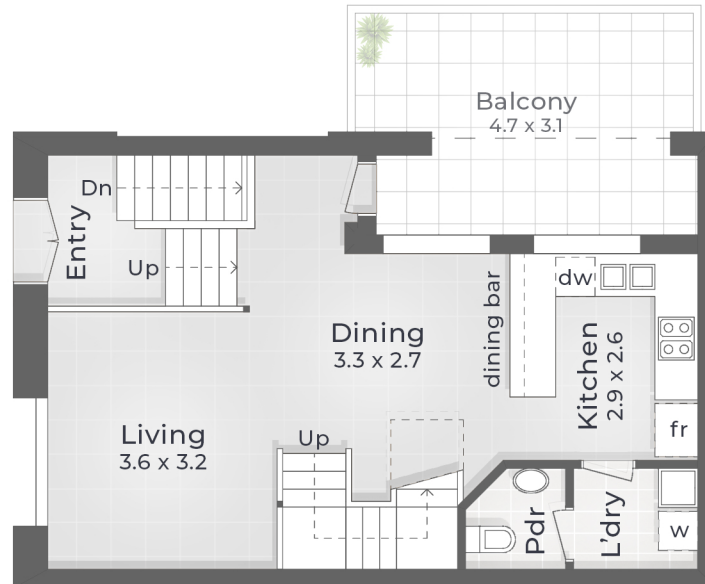
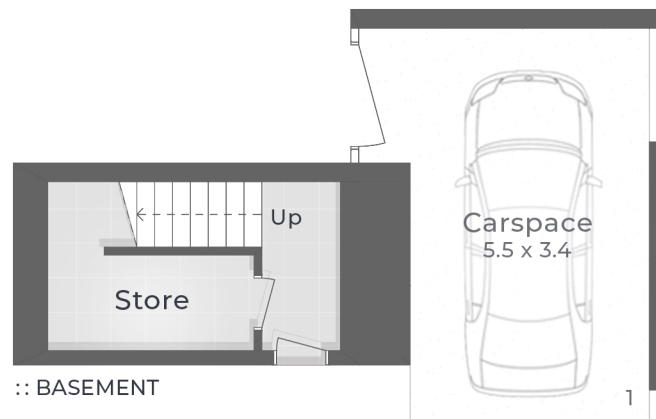


:: FIRST FLOOR  
Ceiling up to 3.5m



:: GROUND FLOOR



:: BASEMENT

## The Boot Factory - 1/117 Lake Street PERTH

2 Bed + Study    2 Bath + Powder    1 Car

Internal 101m<sup>2</sup> | Balcony 15m<sup>2</sup> | Carspace 14m<sup>2</sup> | Total Strata Areas 130m<sup>2</sup>